

FINAL
**Military Relocation Programmatic Agreement Semi-
Annual Report for the Period of June 30, 2019 –
December 31, 2019**



J-001B Archaeological Monitoring: Latte Period Limestone Poulder and Rim Sherd

Prepared By:

**Marine Corps Base Camp Blaz, Public Works Department (MCBCB PWD)
and
Naval Facilities Engineering Command, Pacific (NAVFAC PAC)**

May 2020

Military Relocation Programmatic Agreement Semi-Annual Report for the Period of June 30, 2019 – December 31, 2019

Stipulation XII.A of the March 2011 *Programmatic Agreement for Military Relocation to Guam and the Commonwealth of the Northern Mariana Islands* (hereinafter "PA") provides that in December and June of each calendar year (CY) after the PA is executed, or on an alternate schedule agreed to by the Signatories and Concurring Parties should projects be delayed, the Department of Defense (DoD) shall prepare a report itemizing the review activities carried out pursuant to the PA. These reports shall be provided to the Signatories and Invited Signatories and to the Concurring Parties upon their request.

As required by Stipulation XII.A, this report is presented in eight sections:

Section I. List all individual projects (as identified in Stipulation V.A) completed within the six-month reporting period that were determined to qualify for findings of No Historic Properties Affected or No Adverse Effect on Historic Properties. This list shall include the date of approval by the Cultural Resource Manager (CRM) and description of the project scope.

NOTE: Every initial PA Memo submittal during this reporting period met with SHPO's non-concurrence. The following list contains projects that received concurrence on determinations of No Historic Properties Affected or No Adverse Effect on historic properties after additional consultation. These project appear in Section II with the history of consultations.

NO ADVERSE EFFECT

- **RC# 2019-0111: P-608 Project Design Studies for Construction of Earth Covered Magazines and Ordnance Pad (Revised PA Memo 1)**
- **RC#2019-0131: P-715 Northwest Field Ungulate Fence PA Memo 2**
- **RC#2013-1101: Andersen South Urban Training Complex Operations PA Memo 1**

NO HISTORIC PROPERTIES AFFECTED

- **RC#2019-0198: J-016, J-030, P-311, P-459, P-804 Vertical Construction**
- **RC#2016-0122: P-103 Water Well Field Development – Construction (PA Memo 2 Revised APE)**

Section II: List all individual projects (as identified in Stipulation V.A.) completed within the six-months for which supplemental consultation under this PA has been conducted, including the determination of effect and any mitigation measures identified.

RC# 2019-0111: P-608 Project Design Studies for Construction of Earth Covered Magazines and Ordnance Pad (Revised PA Memo 1)
Project will conduct topographic and geotechnical surveys in support of construction of eight earth covered magazines and an inert munitions storage building in Naval Base Guam Munitions Storage Area and an ordnance pad at Orote Point. Project may include MEC operations.

- 3/12/2019: PA Memo 1 was delivered to SHPO with DON determination of No Historic Properties Affected.
- 4/26/2019: SHPO did not concur with DON determination, and pointed out the presence of a documented archaeological site within the project APE. Note that this site appeared on SHPO data base, but not on the DON data base. SHPO suggested the possible existence of an archaeological district and advised that a new survey was needed.
- 6/7/2019: Information provided by SHPO initiated additional research by DON staff and a site visit to the project APE by a Camp Blaz archaeologist and the Guam State Archaeologist. During the site visit, the State Archaeologist discovered an undocumented standing latte set within the APE.
- 6/7/2019: JRM responded to SHPO, stated that there would be in-house monitoring of the two boreholes closest to the Fena Lake West Site. Boreholes are proposed at the current locations of two Quonset truck shelters located in the APE.
- 6/20/2019: Revised PA Memo 1 delivered to SHPO; includes Fena Lake West Site on map.
- 6/24/2019: SHPO response to 6/7/2019 JRM letter states that SHPO will concur on the **No Adverse Effect** determination on the East Bonya Site with condition for DON to submit an abbreviated monitoring and discovery plan to SHPO, plus a draft and final abbreviated report on the monitoring specific to borings. SHPO requested a buffer around the site and cautioned on the possible presence of burials around the latte set and possible former location of another latte set.
- 7/25/2016: DON met with SHPO to discuss monitoring work plan
- 7/26/2019: The draft work plan for in-house monitoring of boreholes was prepared and provided to SHPO for review (by email). Note that DON is preparing a Scope of Work for survey of the APE, to occur prior to submittal of the PA Memo for construction of the earth-covered magazines. No resources documented during geotechnical work.
- 9/26/2019: Monitoring of borings in progress did not yield any new archaeological resource.
- 10/11/2019: DON submitted Draft Archaeological Survey Work Plan to the SHPO.
- 3/12/2020: DON submitted Final Archaeological Survey Work Plan to the SHPO.
- 4/21/2020: Pedestrian survey fieldwork complete, subsurface investigations ongoing.

RC#2019-0198: J-031, J-033 (formerly J-016, J-030), P-311, P-459, P-804 Vertical Construction

The J-031 and J-033 (formerly J-016/J-030) projects construct two six-story, permanent party, BEQ facilities of reinforced concrete, each to accommodate 300 rooms. The P-311 project will construct an eight outlet fuel filling station (two outlets per island, each outlet will have two dispensing nozzles), fuel truck filling station, administration building, generator building and 60,000 gallon vehicle and equipment ready fuel storage facility at the new base. The P-459 project constructs a multi-story bachelors enlisted quarters (BEQ) building complex with pile foundations and reinforced concrete walls, framing, and roof. The P-804 project constructs a low rise Central Issue Facility (CIF) with Individual Issue Facility (IIF) and Unit Issue Facility (UIF) storage and processing areas of the new base.

- 7/8/2019: PA Memo 1 submitted to SHPO, later DON in receipt of non-concurrence due to perception of Area of Potential Effect (APE) overlap with ongoing data recovery work.
- 8/22/2019: Teleconference call with SHPO explaining that maps could have been better depicted (with “zoom in” overlay) showing APE does not overlap with (then) ongoing work at J-001B Data Recovery Area 2. No questions from SHPO after call; Camp Blaz to provide a letter as a formality documenting that No Historic Properties Affected is an appropriate determination.
- 4/21/2020: Letter routing through Naval Base Guam for signature.

RC#2019-0131: P-715 Northwest Field Ungulate Fence PA Memo 2

The P-715 Northwest Field ungulate control fence is a requirement to be implemented per the 2017 Biological Opinion, to facilitate the eradication of pig/deer from high-quality forest habitat.

- 7/8/2019: PA Memo 2 with No Adverse Effect determination submitted to SHPO, fence construction will be monitored in accordance with 2018 JRM-SHPO Resolution Agreement.
- 8/6/2019: SHPO concurs.
- 4/6/2020: Construction notice to proceed issued to contractor; Camp Blaz archaeologists tracking start of field work.

RC#2013-1101: Andersen South Urban Training Complex Operations PA Memo 1

The Urban Training Complex is proposed to occur within the installation boundaries of Andersen South, to include jungle maneuvers, bivouac, navigation and other exercises on foot with equipment. Vehicles may be used on existing trails and paths.

- 8/23/2019: PA Memo 1 with Adverse Effect determination submitted to SHPO, proposing full data recovery of affected archaeological sites.
- 10/3/2019: SHPO non-concurs and suggests avoidance of sites.
- 4/21/2020: After site visit with range management personnel and Guam SHPO staff in January 2020, PA Memo 1 response to SHPO is routing, to propose limited investigations to further delineate sites for the purposes of preservation.

RC#2016-0122: P-103 Water Well Field Development – Construction (PA Memo 2 Revised APE)

Projects includes the construction of drinking water production wells near Potts Junction at AAFB Northwest Field.

- 8/23/2019: The DON submitted Revised PA Memo 2 to Guam SHPO with a determination of No Historic Properties Affected, incorporating terms from the 2018 JRM-SHPO resolution agreement.

- 4/21/2019: Construction contract solicitation is pending availability of funds.

Section III. Additional coordination under this PA initiated (Stipulations I.A and I.E) within the past six months as a result of changes or additions to the Undertaking. DoD shall provide a summary showing the project name, date of adverse effect notification and status of consultation.

RC# 2011-7959: J-006 Apra Harbor Medical/Dental Clinic

Following initial consultations, the APE was increased to include utility corridors. A revised PA Memo was prepared and a meeting was held with SHPO. The meeting resulted in an agreement for monitoring five areas along the utility corridor.

- 1/15/2019: PA Memo 1, revised to include utility lines, was delivered to SHPO.
- 2/20/2019: SHPO did not concur with DON determination of No Historic Properties Affected due to proximity of known historic properties.
- 3/25/2019: PA Memo 2 delivered to SHPO with revised assessment of **No Adverse Effect**.
- 4/25/2019: SHPO concurrence with DON determination of No Adverse Effect, based on agreement to conduct monitoring at five specific locations along the utility line and preparation of a report on discovery of human bone fragments in disturbed context in the project area.
- 4/21/2020: Utility line excavations are pending issuance of permits. Camp Blaz archaeologists continue spot checks.

RC# 2019-0111: P-608 Construction of Earth Covered Magazines and Ordnance Pad

Project includes construction of earth-covered magazines within Naval Base Guam Munitions Site.

- Archaeological investigations are proposed for the entire APE; outcome of the investigation and other planning activities may result in design changes within the APE or changes in the APE itself. A future PA memo for construction will incorporate a design factoring in the results of archaeological investigations. Alternative locations for consideration are also to be surveyed in case avoidance within current APE is not possible (work plan pending coordination with the SHPO).

In addition to changes in project APEs, there were additional consultations due to discoveries of human bone fragments in J-006 and inadvertent discoveries in J-001B and P-715.

Discoveries of Human Skeletal Material in J-006 (See map in APPENDIX 2)

- Human skeletal material (four bone fragments) were discovered at three locations during MEC operations in the J-006 Medical/Dental Clinic APE. The remains consisted of individual

bones or bone fragments. All were found in disturbed context in the upper layer of fill soil that had been spread across the site.

- Per Appendix G of the 2011 PA, discovery of human remains protocol was followed. The contractor notified the Contract Officer and Camp Blaz archaeologists, who responded to each discovery, examined the bone and its context, collected the bone and recorded the location. All construction was halted within a 5 x 5 meter area centered on the discovery location pending further investigation.
- Upon confirmation by a professional osteologist that the bone/bone fragment was human, the protocol for discovery of human remains, including notification of SHPO, was followed.
- Soil from the immediate area of each discovery was screened through ¼" mesh by Camp Blaz staff supervised by an SOI qualified archaeologist. Soil profiles were documented and photographed. No additional bone was recovered at any of the discovery locations.
- Discoveries were made on 3/19/2019, 4/3/2019, 4/16/2019, and 5/9/2019. See map in Appendix 1 for locations of the discoveries.
- As of April 2020, the site work continues. Upon completion of the site grading and excavation of a utility corridor, a report will be prepared and a copy will be provided to SHPO. Remains are temporarily secured in Camp Blaz facility.

Inadvertent Discoveries (See Appendix 3)

- Archaeological Monitors working under the Resolution agreement of July 2, 2018, made discoveries of archaeological materials in J-001B and P-715 during this reporting period. Inadvertent Discovery protocol (Stipulation XI of the 2011 PA) was followed for each discovery.
- While there is a sparse Latte Period ceramic scatter across the landscape of the Northern Plateau, a result of more than 1000 years of exploitation of the resources available on the plateau, there are areas with discrete concentrations of artifacts, including ceramics and lithics, and dark soil stains that frequently are found to be a surface manifestation of a subsurface archaeological features, most often an earth oven.
- We may not call these areas "sites" at initial discovery, but they are locations that need further investigations to determine boundaries and integrity and whether features are present. DON will contract with experienced archaeological consultants to conduct investigations on each discovery and prepare a report of their findings.
- Upon confirmation by Camp Blaz archaeologists that a discovery merits further investigation, both ACHP and SHPO are notified per Stipulation XI of the 2011 PA and the contractor is instructed to put up a high-visibility fence around the discovery, to include an appropriately-sized (typically 30 meter or less) buffer, and to remain out of the fenced area pending further archaeological investigations.
- Information and maps related to each inadvertent discovery can be found in Appendix 3 of this report.

Section IV. Summary of progress on the implementation of mitigation measures specified in Stipulations VI, VII and VIII.

General Mitigation Measures (Stipulation VI)

Stipulation VI.A.1: Mitigation Plans
<ul style="list-style-type: none">• Mitigation Plans during this reporting period relate to inadvertent discoveries in J-001B and P-715. For the inadvertent discoveries, all of which are archaeological sites, data recovery is the PA-stipulated mitigation if the area cannot be avoided.• Mitigation plans were prepared for data recovery in both project APEs, Dixon et al for J-001B; Leppard and Rieth for P-715.• Mitigation/data recovery plans for inadvertent discoveries will be addendums to the plans followed by the previous projects. The mitigation actions will be specific to each Inadvertent Discovery. Background information, such as environmental data, previous investigations, and cultural history, will be incorporated by reference to the existing Plans.

Stipulation VI.A.2: Data Recovery Reports
<ul style="list-style-type: none">• Technical reports produced for Inadvertent Discoveries will be addendums to existing technical reports. No technical reports for inadvertent discoveries were completed during this reporting period. The DON submitted an End of Fieldwork letter to the SHPO as a courtesy prior to release of investigations area to the contractor.

Stipulation VI.B: Public Education and Interpretation
Public Information Booklets based on the archaeological data recovery of sites in the J-001B project were made available and distributed.
<ul style="list-style-type: none">• 6/10/2019: Received SHPO comments• 6/13/2019: Received approval of translation from DCA.• 8/6/2019: Camp Blaz received advance digital copy of English version (final).• 9/16/2019: Camp Blaz delivered copies to various outlets, including copies for elected officials. Digital copies are available at the Cultural Resource Information website.

Stipulation VI.C: Enforcement of Construction Contractor Measures
Measures to protect historic properties are included in construction specifications for all projects.

Stipulation VI.D.1: Cultural Resource Awareness
--

Camp Blaz's Secretary of the Interior qualified Archaeologists continue training incoming contractors working on Military Relocation projects as required by the 2011 PA. A total of 289 personnel received CR Awareness training during this reporting period. The total trained since 2011 exceeds 4,700.

Stipulation VI.D.2: Access to Historic Properties on DoD Lands

Access Program Coordinator has provided an update covering this reporting period. See Section 8 of this report.

Stipulation VI.F: Professional Oversight

There were three Secretary of the Interior qualified archaeologists at Camp Blaz; A vacancy is anticipated in the next reporting period due to promotion. Camp Blaz archaeologists also consult regularly with NBG and AAFB Cultural Resource Managers (CRM) and the Joint Region Marianas CRM to ensure oversight of actions and mitigations related to the Marine Corps Relocation.

Stipulation VI.G: Update of Historic Properties Information

Contracts for archaeological investigations, whether for surveys or data recovery, require that the contractor prepare a new or updated (as appropriate) Guam Historic Property Inventory (GHPI) form for the property to include a NRHP status recommendation.

Guam-Specific Mitigations (Stipulation VII)

Stipulation VII.B.1: Signage at South Finegayan Latte Park

While Relocation actions (housing) are no longer proposed at South Finegayan, the requirement to update the interpretive sign at the South Finegayan Latte Stone Park remains in the 2011 PA. The interpretive signage will incorporate information obtained by a recent NBG investigation of the features around the standing latte set. There is also opportunity to manage this requirement with other interpretive needs or initiatives beyond the 2011 PA.

Stipulation VII.B.2: Maintain Access to Southern Mountain Trail

There have been no actions restricting access to the Southern Mountain Trail.

Stipulation VII.C.2: Assist SHPO with Update of Guam Comprehensive Preservation Plan

This requirement is to occur at 5 year intervals for the life of the PA. Calendar Year 2022 is the next target period for the SHPO Liaison to assist the SHPO since last update of the Preservation Plan was completed in 2017.

As of 26 May 2020 a Navy-funded third party SHPO Liaison has been working with the Guam SHPO to provide assistance per Stipulation IX of the 2011 PA. The non-Navy liaison has the advantage of being a neutral third party and the Navy is in the process of converting the liaison to a full time work schedule for at least one year to further support the SHPO for increased workload associated with COVID-19 challenges.

Stipulation VII.C.2: Prepare/Update Stand-alone Guam Synthesis

This requirement is to occur at 5 year intervals and is linked to completion of updates to the Guam Comprehensive Preservation Plan. Completion of the Guam Plan in 2017 triggered the requirement for preparing the first stand-alone Synthesis. A two-volume synthesis was completed and delivered to SHPO on January 4, 2019. An additional set was furnished to the SHPO upon request.

Stipulation VII.C.3: National Register Nominations

This stipulation requires that DoD prepare at least two NRHP nominations per year for historic properties on DoD land. Currently, three draft nominations are with SHPO for review, two final nominations are routing through AAFB, and one is routing through NBG. Upon completion of routing through installations, the nominations will be routed through Joint Region Marianas, then on to NAVFAC HQ for delivery to the Keeper of the National Register. Three new nominations are under contract for development in CY19.

CURRENT STATUS OF NOMINATIONS

Calendar Year	Property Name	Status
2012	<i>Talisay (66-02-2366)</i>	Listed in NRHP
2012	<i>Tumon-Maui Well (66-01-2278)</i>	Listed in NRHP
SHPO	<i>Mahlac Pictograph Cave (66-02-1985)</i>	Listed in NRHP
2013	<i>Dobo Springs Latte Set Complex (66-02-0151)</i>	With HQ for delivery to Keeper
2013	<i>North Field AAFB</i>	Paused. Will be revisited as more nominations for AAFB sites are approved.
2014	<i>Dãdi Beach Defensive Bunker (66-02-1303)</i>	With HQ for delivery to Keeper
2014	<i>Pãpa'etnon (66-02-2330)</i>	NBG routing completed; pending routing through JRM
2015	<i>Maulap River Complex (66-02-1978)</i>	With HQ for delivery to Keeper
2015	<i>Sagãyan Atmagosa (66-02-2337)</i>	Routing through NBG
2016	<i>Torres Farmstead (66-08-2717)</i>	Nomination submitted to AAFB second time, Camp Blaz inquiring on status.
2016	<i>Tarague Well #4 (66-07-1586)</i>	Nomination submitted to AAFB second time, Camp Blaz inquiring on status.
2017	<i>Songsong Mã'gas (66-09-1935) & Guekon Yu'us (66-09-1940)</i>	Routing through NBG
2018	<i>Arizona Room, AAFB (66-07-1588)</i>	Draft with SHPO for review
2018	<i>Straggler's Cave AAFB (66-08-1515)</i>	Draft with SHPO for review

2018	<i>Block Rock Shelter, AAFB (66-08-1516)</i>	Draft with SHPO for review
2019	Pugua Point site (cut steps) proposed by SHPO	In progress
2019	Pugua Point site (Site 13) proposed by SHPO	In progress
2019	JRM Conference Table Constructed for a March 1967 conference between civilian and military leaders of US and South Vietnam and recently featured in a documentary hosted by JRM PAO and Guam Parks and Historic Sites historian.	In progress
2020	Two historic properties to be selected in coordination with Navy and SHPO	Future sites to be selected from pre-approved lists.

Note: Trifolds have been prepared for sites in *italics* at the request of SHPO.

Stipulation VII.C.4.a: Cultural Repository Funding
DON advocated for funding and secured Congressional authorization. Office of Economic Adjustment granted \$12 million to Office of the Governor. Site at University of Guam was selected and groundbreaking ceremony held. Solicitation in progress, slated for completion around 2021.

Stipulation VII.C.4.b: Museum Complex Advocacy
DON provided a white paper explaining the effort to secure funding and to meet the commitment for advocacy. No federal agency was able to provide funding for a museum complex.

Stipulation VII.D: National Park System on Guam
No impacts to NPS related to the military relocation have been documented.

Mitigations Specific to Tinian (Stipulation VIII)

Stipulation VIII: Tinian Mitigations
Tinian mitigations stipulated under the 2011 PA are currently on hold.

Section V. List projects to be completed in the next reporting period, including the determination of effect and any mitigation measures required.

Note: Projects listed in Section V are anticipated during the next reporting period; however, timing may vary due to scheduling decisions.

RC# TBD: J-017-II Main and Commercial Gates
--

- Current J-017-II is a sub-set of the original J-017 Utilities and Site Improvements project, but this portion occurs on top of rough-graded areas under J-001B APE.
- J-017-II refers to construction of entrance gates into future Camp Blaz.
- PA Memo preparation is in progress

RC# TBD: P-312 Distribution Warehouse

Currently in planning. This project constructs a low-rise, low-bay distribution warehouse. The warehouse will support the Supply, Food Service, and Medical Logistics (MEDLOG) detachments.

RC# TBD: J-200-Phase 2 Comm Line

- The proposed communication line will run between the J-200 (North Ramp) area and the LFTRC at NW Field.
- A PA Memo has been prepared and is routing for further review prior to SHPO submission.

RC# TBD: J-609 Apra Harbor Embarkation Operations

The Embarkation Facility consists of wash and inspection areas, a bio-secure holding area, a wash water recycling and a storm water retention and infiltration basin. The facility includes an Embarkation Operations Building for controlling the processing and flow of vehicles and trailers, Gate/Sentry House for cargo check-in, and a United States Department of Agriculture (USDA) Inspection Building.

RC# TBD: P-802 Base Warehouse

Project will construct a base warehouse in J-001B project area. A PA Memo has been prepared combining P802 and P803 (multiple vertical project consultation).

RC# TBD: P-803 Individual Combat Skills Training Facility

Project will construct a combat skills training facility. A PA Memo combining P-802 and P-803 has been prepared, but will be finalized with other vertical projects.

RC# TBD: J-017-I Communications Cabling; J-017-III Area Distribution Nodes

These two projects are being combined into a single construction project; PA Memo forthcoming.

RC# TBD: J-017 U&SI Phase 2

This project will have a smaller footprint than the APE previously consulted upon that was previously based on the larger cantonment from 2010 Record of Decision. SHPO did not concur on original consultation under RC 2014-0626 for the old APE.

RC# TBD: J-011 Base Administration and Communications Building

This project constructs a multi-story Base Administrative Building at future Camp Blaz that consolidates the functions for base administration, command and control and other ancillary headquarters functions.

Section VI. Include maps showing the project areas and DoD project numbers, as well as any portions of the APE where sensitivity designations have been changed as a result of further identification and evaluation efforts.

Refer to Appendix 1

Section VII. Results of all dispute resolution efforts under Stipulation XIII

Note: Although this information was previously reported, the information will be kept in this section for ongoing reference.

Dispute resolution was initiated by SHPO at the May 24, 2018 Annual Workshop and a resolution was reached July 2, 2018. This action was described in a previous semi-annual report.

In resolving the dispute, DON agreed:

- To include all historic contexts in future reports (even when historic properties from the different historic periods are not represented in the report),
- To improve quality control to produce better reports, and
- To work with the SHPO to develop alternate archaeological survey standards that are appropriate for Guam.
- To provide at least two archaeological technicians to monitor four horizontal projects: J-001B, P-715, J-755, and P-103. Monitors will inspect initial ground disturbance (initial stump removal, dozing and grading activities).

Status of implementation of 2018 Resolution Agreement between JRM and Guam SHPO

During this reporting period, monitors worked in the J-001B project area and in the P-715 project area. Stump pulls provided a large window to the subsurface and initial soil removal provided 100% surface visibility. The improved surface visibility conditions (relative to surveys in vegetated areas) facilitated discovery of several potential sites. Construction activities are paused within each discovery to include a conservative buffer. All inadvertent discoveries follow established notification and reporting protocol and are protected by high-visibility fencing pending completion of archaeological investigations.

As of April 21, 2020, all discoveries at P-715 were resolved through consultation with the SHPO and ACHP. Site visits were conducted with local elected officials for outreach and transparency.

As of April 21, 2020, only two of eight potential cultural areas were pending completion of fieldwork at J-001B. Three J-001B areas with fragmentary human remains were reported to Guam SHPO and ACHP in March and April 2020. Data collected and studied have and will continue to contribute to a greater understanding of the historical utilization of the northern plateau.

As of May 26, 2020, seven discoveries of potential cultural areas have been reported to the Guam SHPO as a result of J-755 monitoring. More detail will be provided in the next reporting period.

Section VIII. Provide summary data about public access from the Public Access Plan.

Multiple programs are administered by the Public Access Plan Coordinator (APC), who resides at Joint Region Marianas.

- In addition to facilitating access to historic properties on installations, the APC also:
 - Facilitates access to traditional plant collectors, including traditional healers and herbalists,
 - Facilitates access for traditional craftsmen to collect trees from Military Relocation Construction Areas.
 - The APC works with Camp Blaz biologists to locate and identify culturally important tree species in project areas and notifies traditional carvers and canoe builders of their availability. The trees are moved to a staging area off DON property where traditional artisans may collect them.
-
- During this reporting period, two individuals visited historic sites: War Dog Cemetery and Sumay Cemetery.
 - Nine individuals participated in tree collection for carving and canoe building, with interest in ifit (*Intsia bijuga*) and dok'dok (*Artocarpus altilis*) trees.
 - Until restrictions on social distancing are lifted as a result of the Governor's declaration of emergency relative to COVID-19, it is anticipated that routine visits under the Public Access Plan will be suspended.

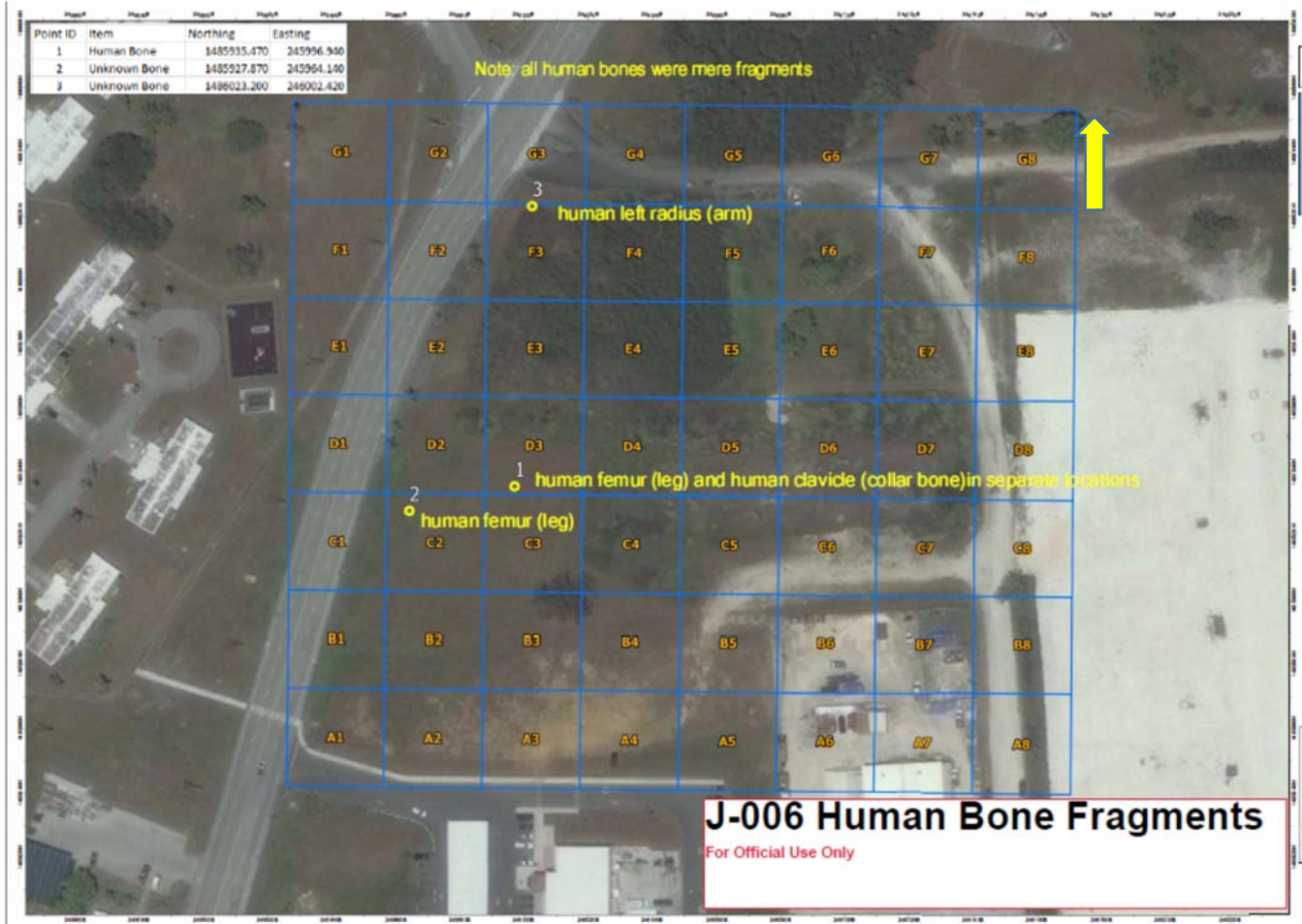
Appendices

- 1) New Project Maps (Preliminary)**
- 2) Appendix E Project List with Updates**
- 3) List and Locations of Newly Discovered Sites (Inadvertent Discoveries)**

APPENDIX 1: PROJECT MAPS

J-006 Discoveries of Human Remains

Four bone fragments were recovered during the reporting period. Locations are shown on map provided by contractor. NEX mini-mart is at center bottom of page. Note that two bone fragments were found at location #1. Yellow Arrow points North.



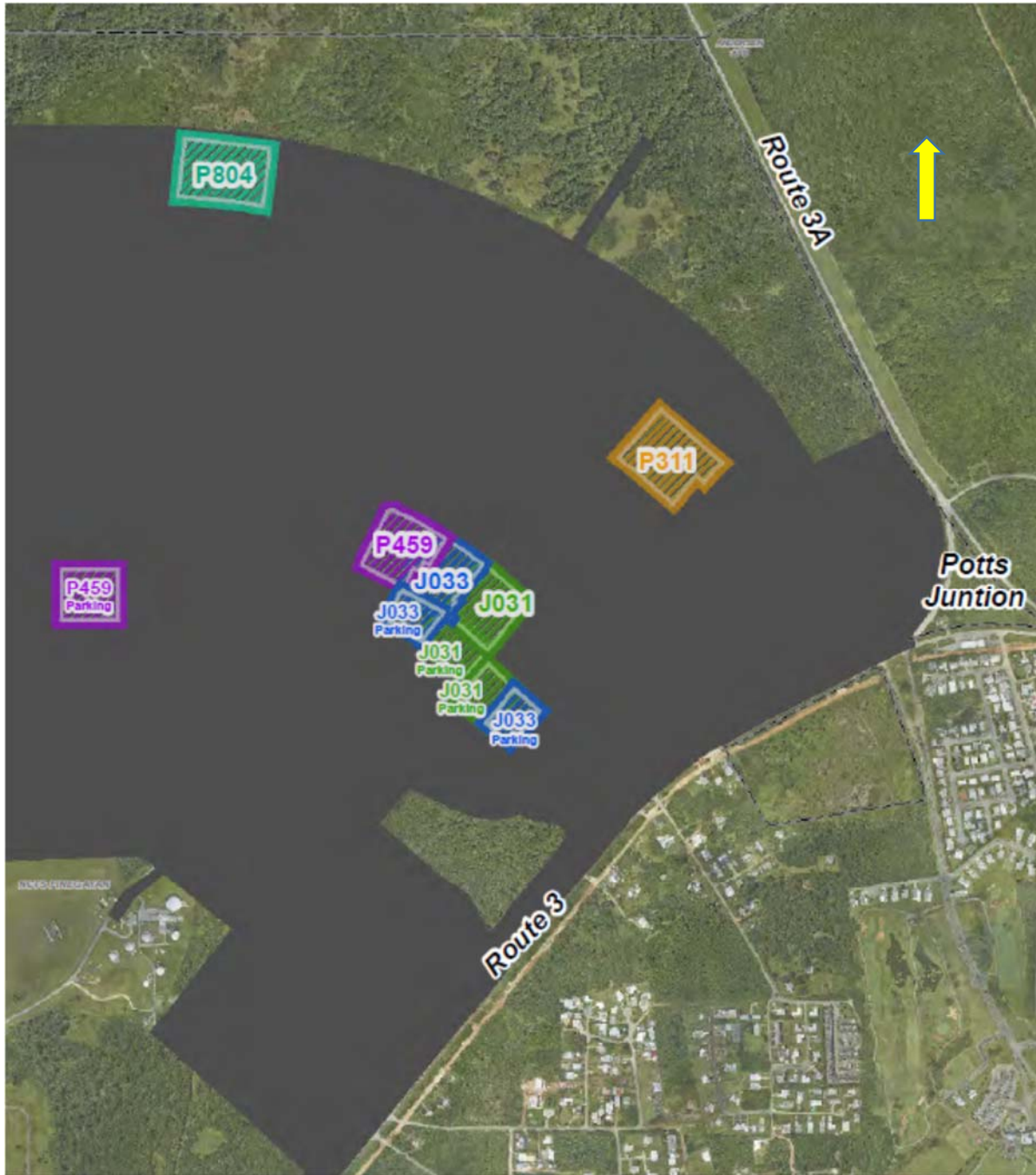
DATE DISCOVERED	DESIGNATION	DESCRIPTION	STATUS
3/19/2019	Bone 1	Human femur, described as a fragment of a robust femur of an adult of small stature.	Secured at Camp Blaz Facility
4/1/2019	Bone 2	Non-human, identified as a metacarpal from an ungulate, possibly a pig or deer	Discarded
4/3/2019	Bone 3	Human clavicle fragment, possibly from right side of body	Secured at Camp Blaz Facility
4/16/2019	Bone 4	Human, identified as a fragment from the upper shaft of an adult femur.	Secured at Camp Blaz Facility
5/9/2019	Bone 5	Human	Secured at Camp Blaz Facility
6/13/2019	Bone 6	Non-human, identified as proximal end of a tibia from an ungulate, probably pig or deer	Discarded

P-103 Well Development Construction Area, AAFB



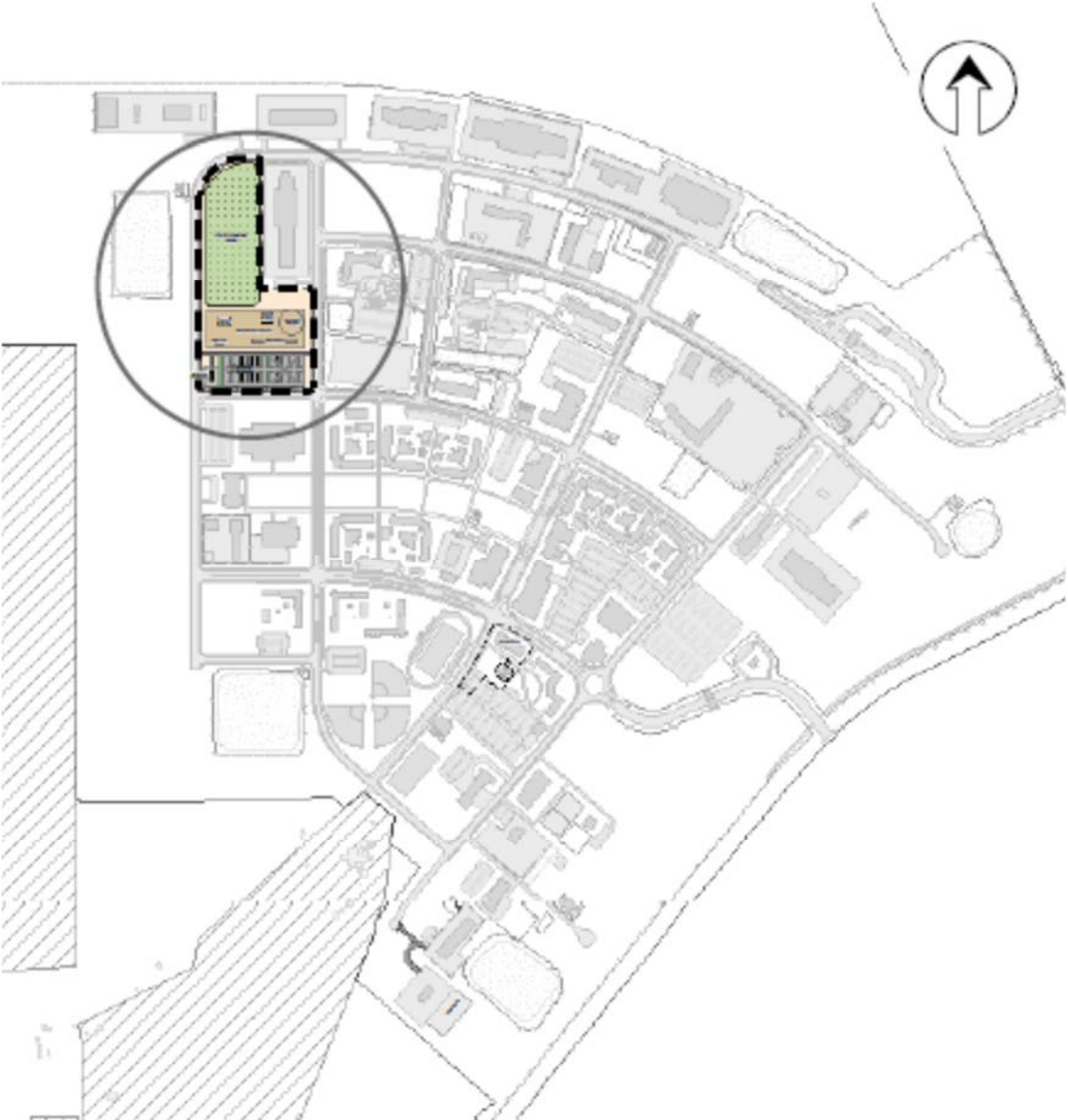
Potts Junction is at bottom left of page.

Multiple Vertical Construction Projects In J-001B

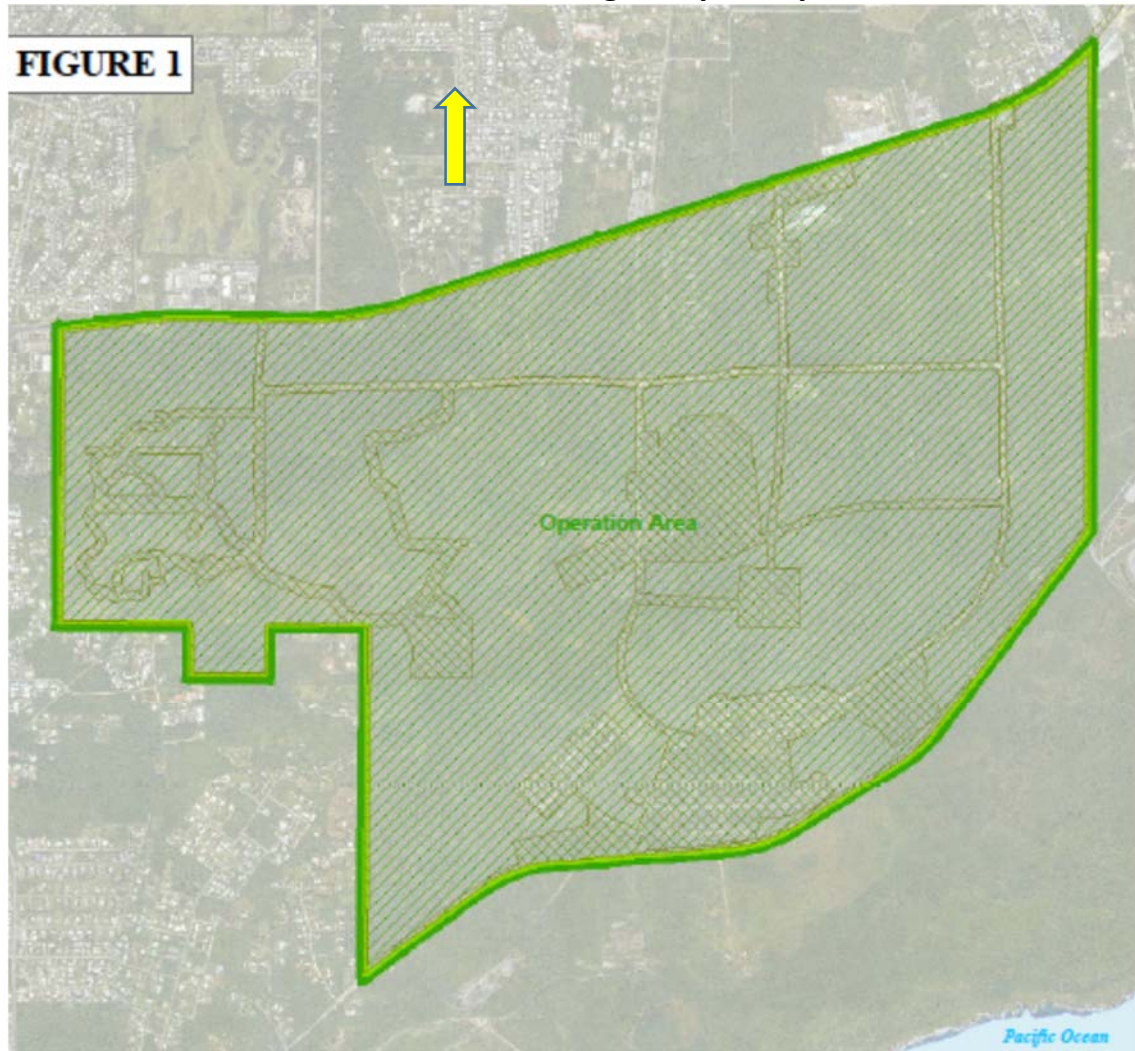


P-459, J-031 and J-033 are Bachelor Enlisted Quarters, all of standard design. Multiple areas with these numbers indicate locations of parking areas. P-311 is the Central Fuel Station; P-804 is a Central Issue Facility (CIF).

P-802 and P-803: Multiple Vertical Construction Project in J-001B APE (Notional)



Andersen South Urban Training Complex Operations Area



Operations APE includes all of Andy South (Yellow Arrow is North).

P-312 Distribution Warehouse

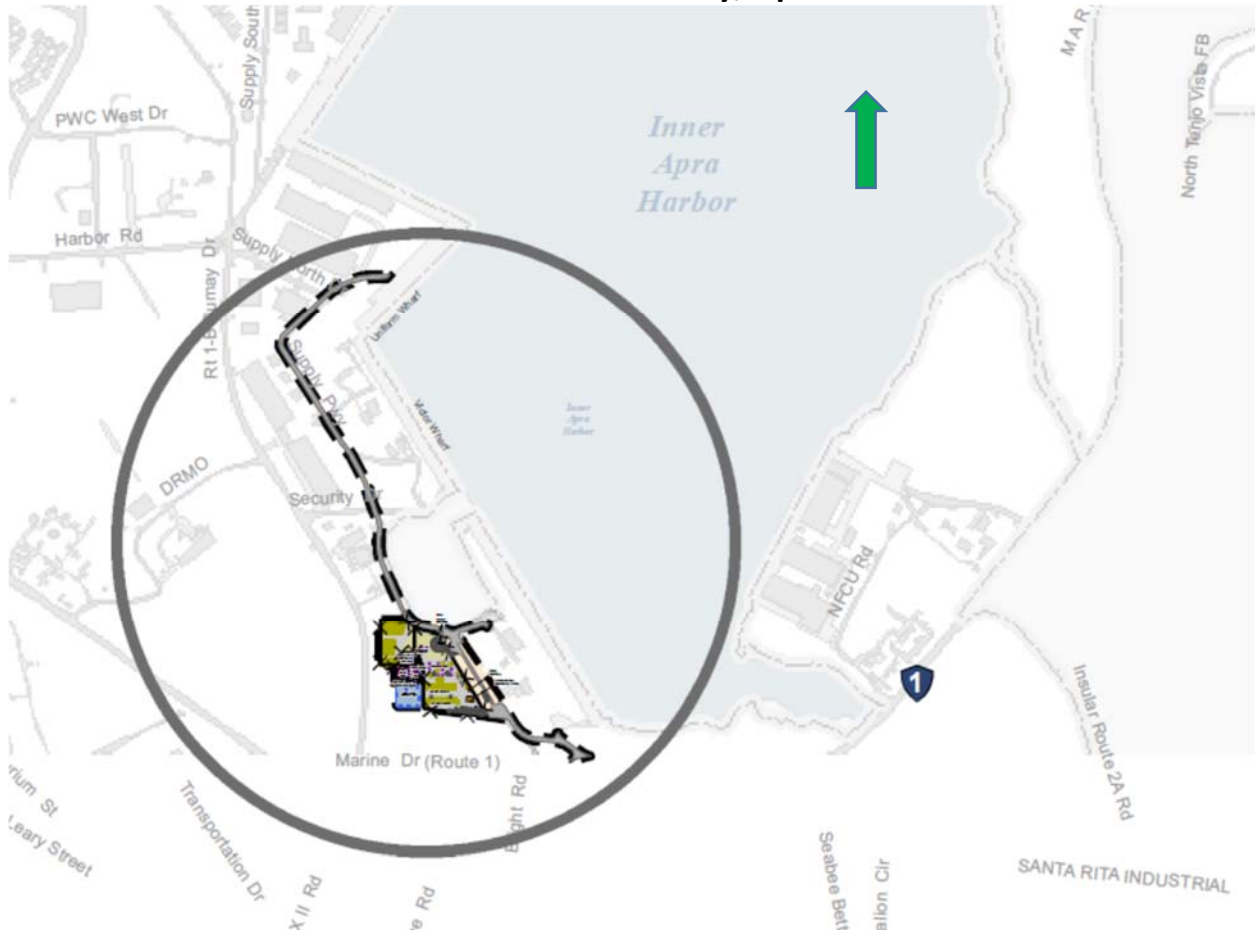


P-608 Construction of Earth-covered Magazines, Ordnance Pad, and Inert Warehouse, NBGMS. Ordnance Pad at Orote Point not shown (existing helipad).



Figure shows project areas within Naval Base Guam Munitons Storage Area. Yellow Arrow is North.

P-609 Embarkation Facility, Apra Harbor

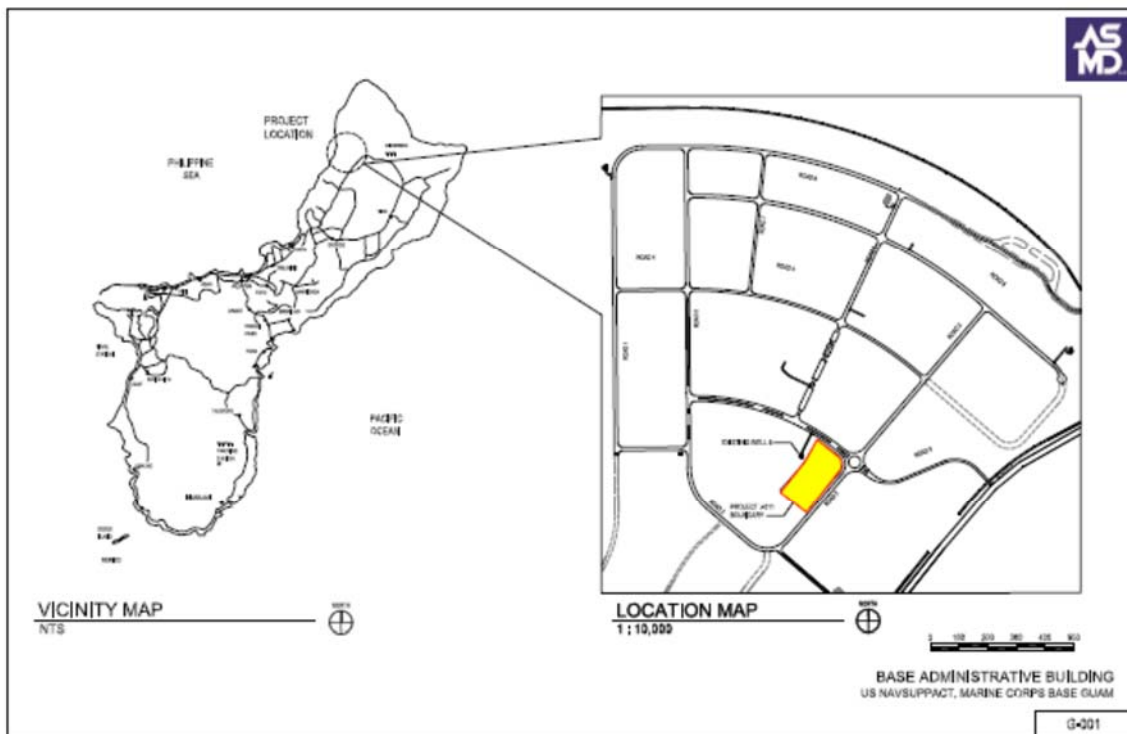


This project constructs a facility to be used for embarkation and debarkation by the Third Marine Expeditionary Force (III MEF) on ships at Naval Base Guam in Apra Harbor. This facility includes multiple components. Project includes multiple buildings, wash down areas, security building, USDA inspection area, fencing and road improvements. Green arrow is North.

J-017-II (Main and Commercial Gates)



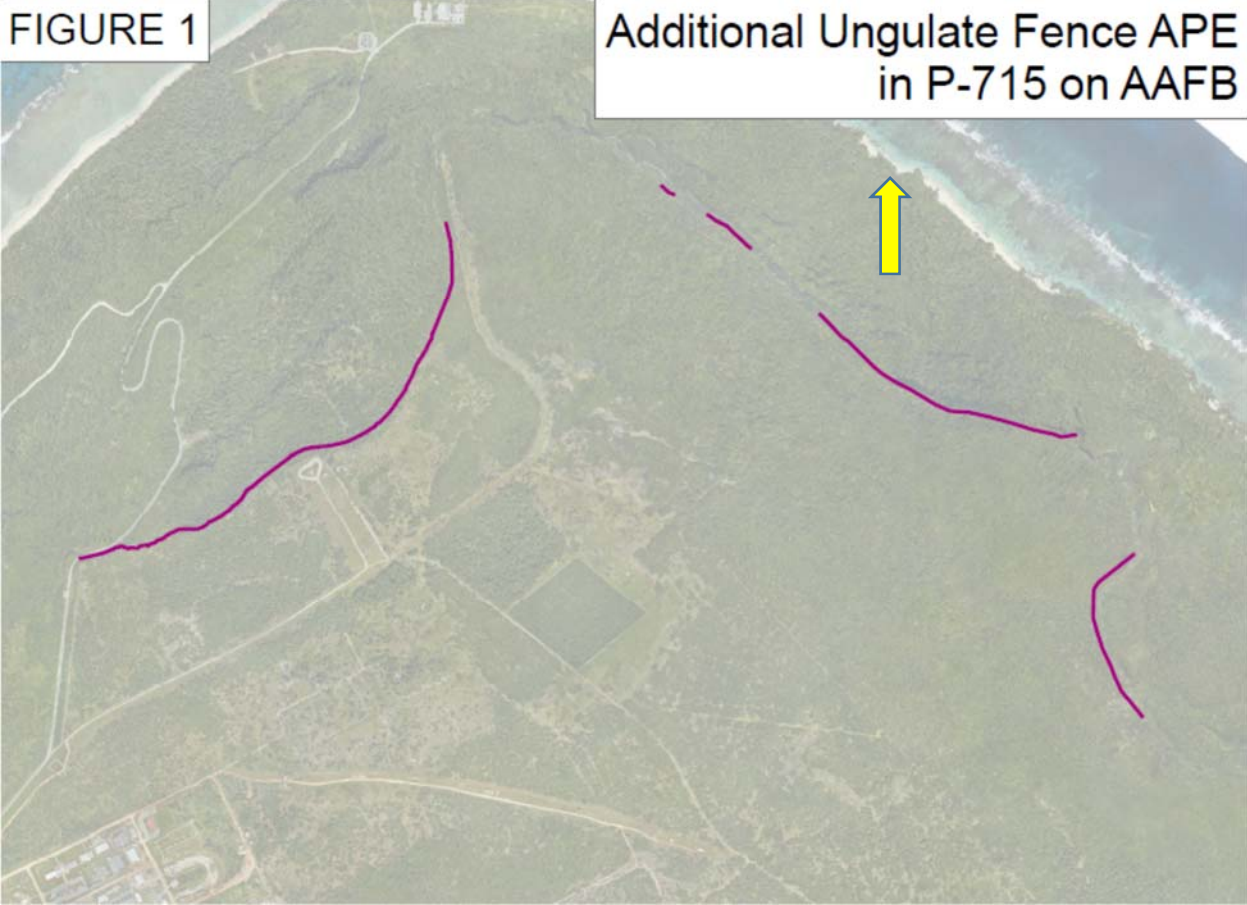
J-011 Base Administration and Communications Building



P-715 Ungulate Exclusion Fence (Yellow Arrow is North)

FIGURE 1

**Additional Ungulate Fence APE
in P-715 on AAFB**



**J-200-2 Comm Lines Between J200 North Ramp Area and LFTRC
(Yellow Arrow is North)**



APPENDIX 2: UPDATED APPENDIX E OF 2011 PROGRAMMATIC AGREEMENT

On Separate Document

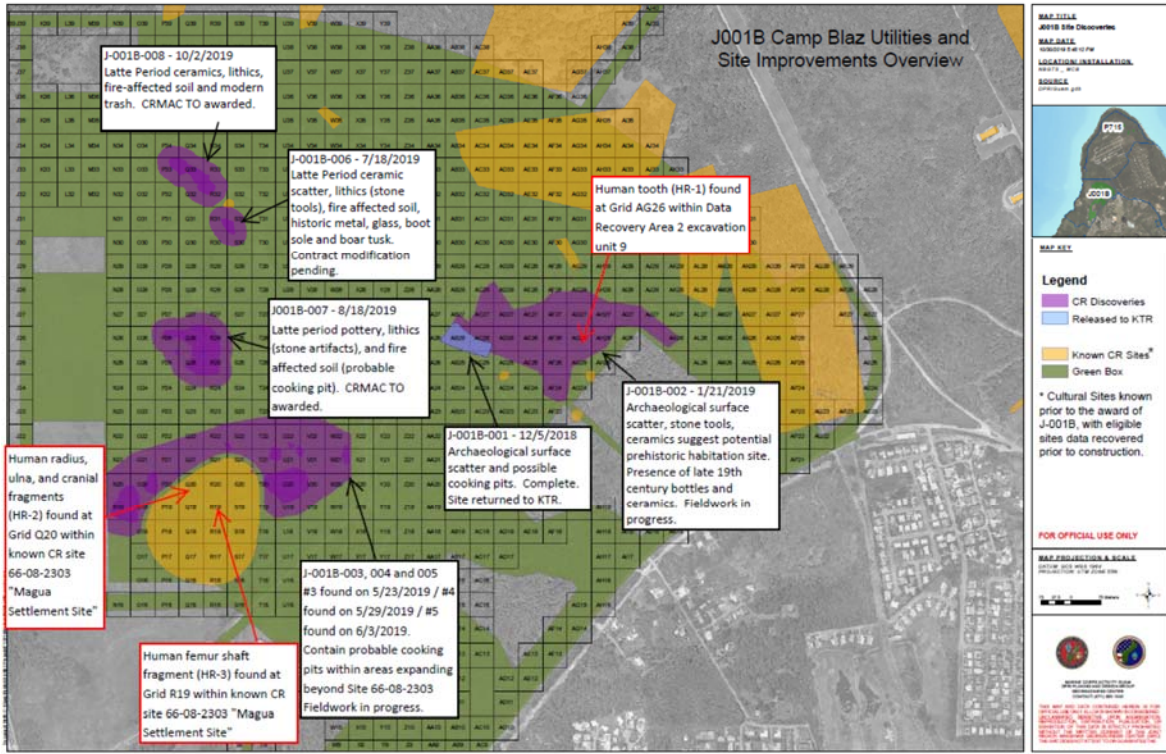
APPENDIX 3: INADVERTENT DISCOVERIES

APPENDIX 3: LIST OF INADVERTENT DISCOVERIES IN J-001B and P-715

Date	Discovery #	Potential Archaeological Area Description upon Discovery <i>Note: All discoveries are flagged/fenced, notifications are sent to appropriate authorities, with construction paused only in the immediate vicinity of the archaeological find (construction work continues elsewhere).</i>
12/5/18	J-001B-001	Archaeological surface scatter and possible cooking pits.
1/21/19	J-001B-002	Archaeological surface scatter, stone tools, ceramics suggest potential prehistoric habitation site. Presence of late 19 th century bottles and ceramics.
3/19/19	P-715-001	Surface artifact scatter of Latte Period ceramics at NE corner of range discovered during recon of Known Distance Rifle Range.
5/8/19	P-715-002	400 Latte Period ceramics discovered in SE corner of rifle range near previously data recovered sites.
5/23/19	J-001B-003	Immediately adjacent to the north and west boundaries of Site 66-08-2303 (Magua Settlement Site) and are almost certainly part of that site. Features (probable cooking pits) are visible in both areas.
5/29/19	J-001B-004	
6/3/19	P-715-003	Large surface artifact scatter SW/NE across KDRR.
6/3/19	J-001B-005	Dark soil feature (possible cooking pit) located some distance east and north of 66-08-2303; not geographically part of the Magua site. Included in notification to Guam SHPO for J-001B-003 and J-001B-004.
6/12/19	P-715-004	Small area with artifact scatter, including lusong (mortar) and 100+ pottery sherds, located in the range road between Known Distance Pistol Range and Modified Record of Fire Range (MRFR).
7/16/19	P715-005	Discovery of Latte Period ceramic scatters and rim sherds is an extension of a previously data-recovered site (66-08-2530) at MRFR.
7/18/19	J-001B-006	Latte Period ceramic scatter, lithics (stone tools), fire affected soil, historic metal, glass, boot sole and boar tusk. Geographically distant and north of Site 66-08-2303.
7/29/19	P-715-Areas 5A&5B	Areas in SE and SW sides of MRFR. Areas contained a variety of surface artifacts and dark stains assumed to be indications of subsurface cooking pits.
8/18/19	J001B-007	Latte period pottery, lithics, and fire affected soil (probable cooking pit). Between site 66-08-2303 and discovery J-001B-006.
10/2/19	J001B-008	Latte period pottery, lithics, and fire affected soil. Some modern broken glass on surface.
10/15/19	P-715-006	Possible fire feature, later ruled out.

Date	Discovery#	Potential Human Remains Description upon Discovery
9/20/19	P-715-HR1	Splintered fragments of human humerus, disturbed context of cleared area. Initial screening for preliminary investigation approved by SHPO to be performed by P-715 subcontractor archaeological firm (in-scope under data recovery mod). Preliminary investigation identified 22 skeletal fragments in 1x1 excavation unit including fragments of skull, mandible and two teeth.
9/26/19	P-715-HR2	Splintered fragments of human ilium and fibula, disturbed context of cleared area. Pending SHPO approval of initial screening for preliminary investigations.
10/2/19	P-715-HR3 P-715-HR4	Two splintered fragments of human tibia, disturbed context of cleared area within same recovery area.
10/11/19	P-715-HR5	Grid AU106: Twenty-six fragments found, majority cranial fragments with femur and other long bones.
10/15/19	P-715-HR6	Grid AM116: three long bone fragments.
10/29/19	P-715-HR7	Grid AS112: two long bone fragments.
10/29/19	P-715-HR8	Grid AS110: cranial and long bone fragments and teeth.
11/15/19	P-715-HR9	Site P-715-005B: 2cm x 2 cm cranial vault fragment with smaller related pieces.

Map of Inadvertent Discoveries in J-001B



Map of Inadvertent Discoveries in P-715 (All Areas Resolved)

